

VICTORIA'S SECRET

FREE SHIPPING
WITH \$25 CLOTHING
OR SHOE PURCHASE
use code: SP1441269
details, page 47

Summer STYLE GUIDE

*Fashion A to Z:
the trends you've
gotta try now.*

\$15 OFF \$100
\$30 OFF \$150
\$75 OFF \$250

USE CODE: SP1441245
details, page 47

SUMMER STYLE GUIDE 2014 VOL. 1
COVER LOOK, SEE PAGE 38
VictoriasSecret.com

REDEEM YOUR SECRET REWARD CARD

WORTH \$10-\$500 WITH \$10 PURCHASE. NOW THROUGH APRIL 29.

Value revealed only at checkout starting March 31. See VictoriasSecret.com/secret-rewards for details

AZ *the Sexiest*

STYLE GUIDE

EVER!

DONE TRYING EVERY TREND UNDER THE SUN? WE'RE WITH YOU. HERE, THE ESSENTIALS YOU'LL NEED FOR A SUMMER THAT HAS SEXY WRITTEN ALL OVER IT.



PAGE 16



EASIEST. SHOPPING. EVER.
Our Scan-to-Shop feature lets you experience the catalogue in a whole new way. See pg. 47 for details.



PAGE 22



PG. 57



PAGE 45



guess where you'll be taking this piece?
pg. 6



PAGE 34



Acid Wash
YES, ACID WASH.

BUT NOT THE KIND YOU REMEMBER.
(SHUDDER.) MODERN CROP TOPS & ROMPERS
IN PLUSH FLEECE MAKE FOR A MUCH
SOFTER FINISH & STATEMENT.



1. Beach day
2. Date night



10 Bonus Points

SO MANY REASONS TO LOVE THE BRA TOP DRESS.
(COMING FROM US, BUILT-IN SUPPORT BETTER BE AHH-MAZING.)
LET US COUNT THE WAYS YOU'LL WEAR IT...



3. Sightseeing
(e.g.: shopping)



4. Girl's night out

A-C. Bra Top Dresses.
Built-in shelf bra. Colors, below.
Solid: also in black (93) and white (92). Imported.
Sizes XS-XL.

A. Double-strap Dress.
17" from waist.
Solid: not in bright marine.
Cotton/spandex.
FN 251-099 \$39.50.

Eyelet: modal/spandex.
FN 316-018 \$49.50.

B. Cross-front Dress.
Solid only, 17" from waist.
FN 280-676 \$49.50.

C. Maxi Bra Top Dress.
White and coral blossom are lined. For white, use code DK9.
Not in spa blue or teal/lima lime.
Modal/spandex.
Regular, 38" from waist.
Long, 41" from waist.
FN 319-823 \$58.

SOLID

Spa Blue
C88

Tequila Lime
42V

Ink Blot
J79

Coral Blossom
35T

Bright Marine
41K

Orange/White
Knit Eyelet T87

D. T-strap Sandal. Gold (91), black (93), hot pink (498), tinted pink (NAs) or citrine (G12). Imported polyurethane.
Sizes 5-11; 6¼-8½.
FN 295-162 \$38.

E. The Back Cutout Dress.
From our Essential Tees Collection. Built-in shelf bra. Colors, below. Imported cotton/polyester/spandex. Sizes XS-XL.
18" from waist.
Solid: also in black (93) and white (DK9). FN 309-123
Orig. \$39.50. Sale \$29.50.
Stripe: FN 319-686 \$49.50.

SOLID

Sunset Glow
C88

Ink Blot
J79

Bright Marine
41K

Pop Art Pink
45L

Cloudy Yellow
37K

STRIPED
Classic Stripe
35D

Blue Stripe
DK9

Broom! MORE built-in support

NOT IN THE MOOD FOR A DRESS? OUR BRA TOPS
GIVE CASUAL OUTFITS A LITTLE LIFT.



A-C. Bra Tops. Imported. Sizes XS-XL.
A. Beaded Top. Built-in shelf bra. Black/white stone embellished (4YF). Modal. FN-317-432 \$49.50.

B. Flare Top. Light, removable padding and adjustable straps. White/black (8FS, shown) or black/black (SN4). Prima cotton/modal. FN-310-496 \$34.50.

C. Draped Top. Built-in shelf bra. Pinky cheeks/white gold (55C). Modal. FN-319-414 \$39.50.

D. VS Siren Mid-rise Skinny Jean. Ink blue (5F4). More washes, see page 63. Imported cotton/polyester/spandex. Sizes 0-14. Crop. 28" inseam. Short. 30" inseam. Regular. 32" inseam. FN-313-127 \$69.50.



E. The Supermodel Sweatshirt. Snow heather/love in the sun (6KW). More colors, see page 20. Imported cotton/polyester. Sizes XS-XL. FN-304-605 \$49.50.

F. VS Siren Cargo Ankle Jean. Low rise. Camo (26D). Imported cotton/viscose/polyester/spandex. Sizes 0-14. 28" inseam. FN-315-160 \$79.50. Pointed toe Pump, see page 28.

G. The Low-rise Eva Short. Easy fit. Camo (26D). Imported cotton/spandex. Sizes 0-14. 31/2" inseam. FN-322-527 \$49.50. 9" inseam. FN-322-528 \$49.50.

STYLIST INTEL

PAIR CAMO WITH...

- POPS OF NEON (skip to page 26)
- A SLIM TEE
- HOT PUMPS

CRASH COURSE IN CAMO

this undercover print toughens things up



DRESSES BY NIGHT...
HOT DATE? NOT WITHOUT ONE OF THESE.



A. Faux-wrap Dress. Colors, below. Imported polyester/spandex. Sizes XS-XL, 17" inseam. FN-302-247 \$79.50.

- Plumaria Pink 460
- Ink Blot 379
- Forest Noir 389

B. Cap-sleeve Ponte. Colors, below. Imported polyester/nylon/spandex. Sizes 0-36, 20" inseam. Solid; also in black, red, and winter white (B21). FN-296-726 \$88. Print: FN-304-537 \$98.

- Glazed Gems 47W
- Grace Blue 3CB
- Ink Blot 379
- Red Rally 3AL
- Print
- Black/White Stripe 3HS
- Dark Blon Pineapple 3HS
- Black Floral 3P7

C. Asymmetrical Shift Dress. Colors, below. Imported polyester/spandex. Sizes XS-XL, 21" from waist. Solid; also in black (93) and VS white (DK9). FN-295-327 \$79.50. Print: FN-307-609 \$98.

- Ink Blot 379
- Green Chameleon 3AP
- Print
- Paradise Peach Palm Print 3UE
- Grey/White Floral 02

D. Mid-heel O-ring Sandal. Print: beige (3JN). More colors, see page 24. Imported suede. Sizes 5-11; 6½-8½, 3" heel. FN-310-443 \$98.

d



Love how the neckline showcases the collarbone. (So sexy.)

We'll leave the tough shoe decisions to you...



E. Coil-wrap Sandal. Bone (HN1) or black (3Q0). Imported polyurethane. Sizes 5-11; 6½-8½, 4¼" heel. FN-315-398 \$108.



F. Buckled Ankle-strap Sandal. Black (93), chambray (56H) or white snake (DK9). Imported polyurethane. Sizes 5-11; 6½-8½, 4¼" heel. FN-315-399 \$88.



G. Crisscross Sandal. Evening blush (870), neon coral/brown sugar snake (GV2) or black/z sugar cookie snake (201). Imported polyurethane. Sizes 5-11; 6½-8½, 4" heel. FN-315-299 \$68.



H. Asymmetric Sandal. Sugar cookie snake/brown sugar (5V6), white snake/black (DR0) or black (93). Imported polyurethane. Sizes 5-11; 6½-8½, 4" heel. FN-315-302 \$68.



I. Ankle-tie Sandal. Black (93). Imported polyurethane. Sizes 5-11; 6½-8½, 3¼" heel. FN-315-301 \$68.

d

DRESSES BY DAY...

GO LONG, CUT IT OUT, SHOW SOME SHOULDER.



B



C

B. Cut-out Bra Top Dress.
Lightly padded. Colors, below.
Imported modal/spandex.
Sizes XS-XL. 17" from waist.
Solid: not in tequila lime,
bright marine or heather grey.
White, use code DK9. Black
and coral blossom have spa
blue trim; white and ink blot
have coral blossom trim, red
ignited has VS ivory trim.
FN-319-827 \$59.50.
Print: kaleidoscope fair peach
(2UW) with pop art pink trim
only. FN-321-553 \$69.50.

C. Off-the-shoulder Dress.
Colors, below. Imported
cotton/modal. Sizes XS-XL.
17" from waist.
Solid: not in bright marine.
FN-296-064 \$49.50.
Print: not in kaleidoscope
fair peach.
Kaleidoscope aqua print.
FN-307-640 \$59.50.
Alabaster mosaic tile. Cotton.
FN-316-671 \$69.50.

SOLID



Black
93



White
92



Ink Blot
J79



Red Ignited
3AX



Coral Blossom
3DT



Tequila Lime
4GV



Bright Marine
4FK



Heather Grey
72

PRINT



Kaleidoscope Fair
Peach 2UW



Kaleidoscope
Aqua Print 2CN



Alabaster Mosaic
Tile 4F7

FREE SHIPPING

WITH \$25 CLOTHING
OR SHOE PURCHASE
USE CODE: SP141269
Details, pg. 47



E
embellishment
BECAUSE EVERY GIRL NEEDS
A LITTLE SPARKLE.



*Enough shimmer
to catch the light...
and someone's eye.*



A. Flutter-sleeve Top. Blush embellished (SUT). Imported polyester. Sizes XS-XL. FN-317-601 \$59.50.
VS Siren Mid-rise Skinny Jean, see page 63.

B. Sparkle Tank. Ink blot embellished (SC6) or purple embellished (427). Imported cotton/modal. Sizes XS-XL. FN-317-612 \$59.50.
Cut-off Boyfriend Short, see page 26.

C. Embellished V-neck Blouse. White (SSR) or hot pink (SSQ). Imported polyester. Sizes XS-XL. FN-313-965 \$49.50.

D. Embellished Peplum Top. Black flower embellished (SSS) or white flower embellished (SSR). Imported cotton/modal. Sizes XS-XL. FN-317-602 \$49.50.



As easy as un, deux, trois:
soft, breathable, beach-ready.
Class dismissed.

F

FRENCH (TERRY) LESSONS

- A. French Terry Crochet Short. VS white (DK9) or dark charcoal (3CA). Imported cotton/polyester. Sizes XS-XL. 3 1/4" inseam. FN-315-038 \$39.50.
- B. Crochet Baseball Sweatshirt. Dark charcoal (3CA) or VS white (DK9). Imported cotton/polyester. Sizes XS-XL. FN-315-037 \$49.50. Cut-off Boyfriend Short, see page 26. Double Ankle-strap Sandal, see page 19.
- C. Chambray Jumpsuit. Denim (X45). Imported Tencel® lyocell/polyester. Sizes 0-30. 30" inseam. FN-315-149 \$98. Leather Gladiator Sandal, see page 56.



Get out of Town!

THE CHAMBRAY JUMPSUIT:
ONE-PIECE TO PACK, SO MANY
PLACES TO WEAR IT...

STYLIST INTEL

Take it with you to...

- The day after brunch at a destination wedding. Throw on a cardie to say goodbye to the parents.
- A weekend spent discovering the local spots. Gladiator sandals are up for exploring, too.
- A quick beach getaway. So perfect layered over a bandeau bikini.

H

Hoodies!

FREE SHIPPING

WITH \$25 CLOTHING
OR SHOE PURCHASE
USE CODE: SP141029
Details, pg. 47

- A. The Hoodie.** Colors, right. Imported cotton/polyester. Sizes XS-XL.
 Blueberry twist/everyone loves an angel, heather gray/locals only, heather oatmeal/heart or sunbleached surf/sun love & VS. FN-319-251 \$59.50.
 White/pink sequin wings, heather charcoal/V.S., white/sun love & VS, sunbright citrus/sequin wings or neon apricot/4 ever angel. FN-319-249 \$69.50.
- B. Double V neck Sweater.** Blue tie-dye (Z57). Imported cotton. Sizes XS-XL. FN-316-045 \$49.50.
- C. Double Ankle-strap Sandal.** White (92), taupe (505) or black (93). Imported polyurethane. Sizes 5-11. 6 1/2, 8 1/2, 10 1/2 heel. FN-297-402 \$38.
- D. Crewneck Tank.** From our City Tees collection. Hazy lavender tie-dye (D06), black tie-dye (D80) or beige tie-dye (474). Imported modal/spandex. Sizes XS-XL. FN-314-980 \$39.50.
- E. Open-stitch Sweater.** Ink blot marl (5FW). Imported cotton. Sizes XS-XL. FN-316-041 \$49.50.
- F. Boyfriend Sweater.** Blue stripe (65Q) or natural stripe (65E) or natural viscose. Sizes XS-XL. FN-313-107. Orig. \$49.50. Sale \$49.50. Cut-off Boyfriend Short, see page 59.



*Just the thing to chase
away that shoreside chill.*



Inked

SWEATERS SOAKED
IN BLUE...OUR GO-TO
PRIMARY COLOR IS THE
DYE DU JOUR.

Just tell me how you
really feel

OR LET THESE GRAPHICS
SPELL IT OUT FOR YOU.



STYLIST INTEL

Our Supermodel
Sweatshirts are as
bold as ever—but
they're not just for
lounging. For an even
cooler message, pair
them with:

- Leather minis
- Skinny jeans
(see page 63)
- Blazers
- Hidden-wedge
Sneakers
(see page 31)

FREE SHIPPING

WITH \$25 CLOTHING
OR SHOE PURCHASE
USE CODE: SP1441269
Details, pg. 47

A. The Supermodel Sweatshirt. Colors, far left: Imported cotton/polyester. Sizes XS-XL. Navy/I love you but, navy/striped/Call, sunset glow/sunkissed, snow heather/love in the sun, sunbleached surf embellished or neon hot pink. FN-304-605 \$49.50. Dark charcoal/crochet. FN-310-977 \$59.50. True navy sequin or snow heather sequin. FN-304-603 \$69.50. Dark charcoal/chiffon ikat. FN-311-732 \$59.50. White crochet. FN-315-026 \$69.50.

B. Tie-front Tank. Colors, below: Imported viscose. Sizes XS-XL. Print: FN-316-529 \$49.50. Embellished: polyester. FN-315-040 \$49.50. Eyelet: FN-315-020 \$49.50.

PRINT
Purple Ikat Print
29M

EMBELLISHED

White
Embellished SSR

EYELET

White Eyelet
DKJ

VS Siren Mid-rise Skinny Jean,
see page 63.

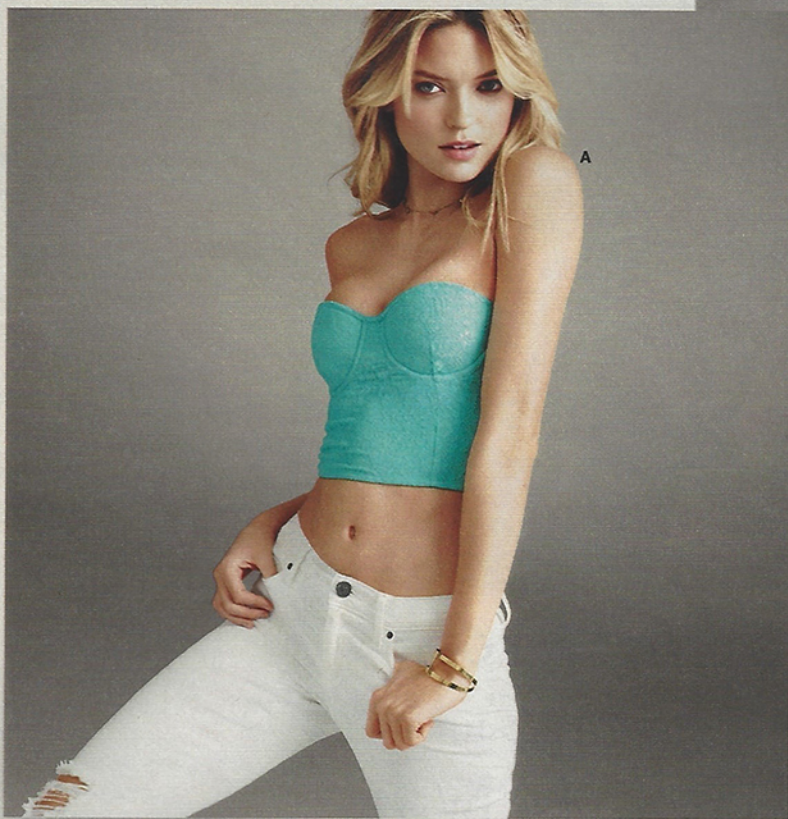


KNOT YOUR TOP

Our official shirt of Summer
tanks with a twist

LACE, LACE
everywhere!

USUALLY A TRIM,
LACE IS NOW THE MAIN
ATTRACTION.





m MEET THE
mid-heel
THE SWEET SPOT IN
YOUR SHOE CLOSET.



A. Mid-heel T-strap Sandal. Misty grey (C12, shown far left), American blue (4F9, shown below far left), black (903), plumeria pink (460D) or rose cloud (956), imported kid suede. Sizes 5-11; 6½-8½, 3" heel. FN 307-363 588.

B. Mid-heel O-ring Sandal. Seascape blue (469, shown left), brown sugar (4XV, shown below left), pearl beige (3JN), plumeria pink (462), black (933) or fink blue (2B3). Imported suede. Sizes 5-11; 6½-8½, 3" heel. FN 310-443 598.

C. Ankle-strap Mid-heel Sandal. Night ocean (409, shown below left), moonstruck grey (48Y, shown below left), rose cloud (490), plumeria pink (462), fink blue (2B3), bright cherry (43Y) or black (933). Imported kid suede. Sizes 5-11; 6½-8½, 3" heel. FN 299-501 578.

D. V-neck Top. Colors, below. Imported polyester. Sizes XS-XL. FN 313-999 \$49.50.

Pink/Orange
Columbia 201

Pale Pink
262

E. VS Siren Mid-rise Ankle Jean. Moonlight angel (3AP), imported cotton/polyester/spandex. Sizes 0-14; 25" inseam. FN 313-129 \$69.50.

F. D'Orsay Sandal. Citron glow (39T), silver iridescent (CVO), volcanic red (42X), sause (4W6), bright marine (4F0), white (DK9) or black (933). Imported polyurethane. Sizes 5-11; 6½-8½, ¼" heel. FN 310-267 538.

G. Colorblock Cross-body Bag. Neon pink/coral (CV7), imported polyurethane. 7½ x 10½ x 4½". FN 313-989 \$48.

H. T-strap Thong Sandal. Nissi or ydral pink (5A3), VS ivory (D44), black (933), electric lemon (5W0), American blue (564) or neon coral (56E). Imported cotton. Sizes 5-11; 6½-8½, ¼" heel. FN 315-362 538.

I. Yoga Bralette. Neon kiwi (59W), black (933), white (DK9) or heather grey (7Z). Imported spandex. Sizes XS-XL. FN 310-483 \$19.50.



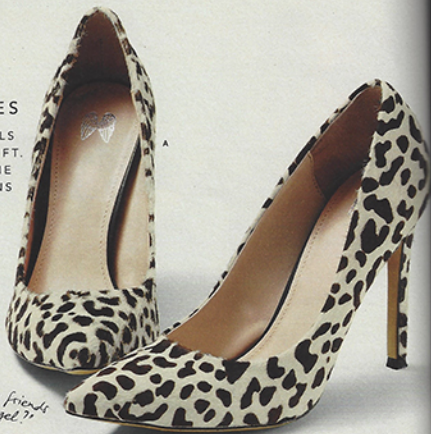
NOT YOUR
AVERAGE NEON
YOU'VE NEVER MET BRIGHTS
LIKE OURS. SO WEARABLE,
THEY'RE ALMOST A NEUTRAL.



P

PICK-UP LINES

OUR HIGHEST HEELS WILL GIVE YOU A LIFT. PREPARE FOR SOME CLASSIC COME-ONS IN 3, 2, 1...



"Would you flush me or I can tell my friends I've been flushed by an angel?"



"Are you tired? Because you've been running through my mind all day long."



"Do you believe in love at first sight—or should I walk by again?"

A. Pointed-toe Pump. Imported. Sizes 5-11. 6½-8½, 4" heel. Spotted cheetah (SHW, shown above) or leopard (3ZB, shown right) calf hair. FN 304-584 \$108. Pearl beige (3JN), black (3Q), plumera pink (4GD) or night ocean (4GJ) leather/suede. FN 302-357. Orig. \$98. Sale \$79.



It's too hot for clothes, but naked is not an option. What to wear?

A barely-there, flutter-sleeve tee that catches the breeze—in a pale color that reflects the sun.

B. Lace Flutter-sleeve Tee. From our Angel Tees collection. White (DK9) or black (3Q). Imported polyester. Sizes XS-XL. FN 315-115 \$59.50. Cut-off Boyfriend Short, see page 26.

C. Ruched Mini Dress. Colors, below. Imported. Sizes XS-XL. 17" from waist. Eyelet: polyester/viscose. FN-315-721 \$49.50. Solid: white and coral blossom are fully lined. Modal/spandex. FN-319-817 \$49.50. Print: modal/spandex. FN-320-064 \$59.50.



Black/white
Eyelet
31X



Bright Marine
47A



White
DK9



Black
3Q



Ink Blot
J79



Coral Blossom
30T



Red Kaleidoscope
21W

R

Really Great Curves

...WITHOUT EVEN TRYING.
AKA: WHY THE RUCHED DRESS SHOULD HAVE A PRIME SPOT IN YOUR CLOSET.



SO SNEAKY



Totally pretty enough
to wear with a dress.

Health height:
a hidden wedge gives
low-key outfits a boost.

A. Cosanna Lace Detail Sneaker.
By Report Signature™. Black/white lace
(Q66). Imported polyurethane. Sizes 6-10;
6½-8½. FN-307-112 \$80.

B. TNYC Slip-on Sneaker.
By The Blonde Salad Steve Madden.
Imported. Whole sizes 6-10.
Snake-embossed (HS7) leather.
FN-315-949 \$129.

C. Zaren Slip-on Sneaker. By Dolce Vita.
Silver (4HS) or black (4AW). Imported
leather. Sizes 6-10; 6½-9½. 1½" hidden
wedge heel. FN-315-199 \$139.

D. Canvas Bowie Wedge Sneaker.
By Ash. Sapphire (56H), clay (34Z),
shocking pink (55H) or black (93). Imported
suede/cotton canvas. Whole sizes 5-10.
3" covered wedge heel. FN-297-725 \$195.

E. Hendrix Ter Sneaker. By Ash.
Fluorescent yellow/silver (3WW), royal/silver
(486), white/silver/fluorescent peach (56C)
or black/silver (44W). Imported leather/
suede. Whole sizes 5-10.
FN-315-201 \$195.

F. Jazz Bin Wedge Sneaker. By Ash.
Black (4AW), fluorescent yellow/silver
(DWW), white (56C) or fluorescent peach/
silver (56E). Imported leather/nylon.
Whole sizes 5-10. 2½" hidden wedge heel.
FN-315-202 \$235.

STREET-STYLE PICS JUST LOOK BETTER WITH
OUR KICKS. SLIP 'EM ON FOR LOTS OF LIKES
& "LOOOOVE!" COMMENTS.





TOO MUCH CROCHET? NEVER!

A. Crochet Racerback Tank. Colors, below. Imported cotton. Sizes XS-XL. FN-315-123 \$79.50.



B. Cold Shoulder Dress. Coconut milk (B20), black (B3) or heather pebble (3T4). Imported cotton/nylon. Sizes XS-XL. 16" from waist. FN-315-251 \$88. Cold-wrap Thong Sandal, see page 53.

C. Racerback Sweater Tank. Colors, below. Imported cotton. Sizes XS-XL. Heav stripe. FN-316-044 \$39.50. Solid. FN-315-068 \$29.50.

— Pink Stripe Q77

— White DK9

— Sunset Glow G88

— Black B3

— Grace Blue 3CB

— Medium Heather Grey 35M

D. Slim Mid-rise Skinny Jean, see page 63.

E. The Lace Collection. Sunset glow (G88), spa blue (C58) or pop art pink (4GE). Also in black (B3) and white (DK9). Imported nylon/spandex. Sizes XS-XL.

F. Bandeau. Sunset glow, black or white (B3). FN-310-892. Dtg. \$29.50. Sale \$15.50.

G. The Racerback Tank. Heav stripe. FN-316-044 \$39.50. Solid. FN-315-068 \$29.50.

H. The Bralette. Imported spandex. Sizes XS-XL. FN-310-483 \$19.50.

I. Yoga Bralette. Heav knit (C9V, shown above), heather grey (72, shown right), sunset glow (G88), spa blue (C58), pop art pink (4GE), white (DK9) or black (B3). Imported spandex. Sizes XS-XL. FN-310-483 \$19.50.

FREE SHIPPING
WITH \$25 CLOTHING
OR SHOE PURCHASE
USE CODE: SP144269
Details, pg. 47

U

Underwear is Outwear

OUR LACIE BRALETTES ARE
SO PRETTY, IT'D BE A SHAME TO
KEEP THEM UNDER WRAPS.





FREE SHIPPING

WITH \$25 CLOTHING
OR SHOE PURCHASE

USE CODE: SP1441269

Details, pg. 47

A-B. Vintage Tees.
Semi-sheer, sublimely soft styles with a heathered look and an easy draped fit. Perfect alone or layered, they're a laid-back must-have. Colors, right. Imported polyester/flax. Sizes XS-XL.

A. Scoopneck Tank.
Not in sea breeze or citrus.

FN-310-373 \$29.50.

Special any 2/\$50.

VS Siren Mid-rise Skinny Jean, see page 63.

B. Dolman-sleeve Pocket Tee. Not in red placed stripe, blue placed stripe or blue preppy stripe.

FN-310-491 \$29.50.

Special any 2/\$50.

C. Track Short.

Rinse (5P7). Imported Tencel® lyocell/polyester. 3" inseam. Sizes XS-XL.

FN-315-166 \$49.50.

Vintage Tees

CIRCA 2014.

BECAUSE A PAIR OF DISTRESSED
JEANS DESERVES AN EQUALLY
COOL PARTNER UP TOP.

W What a Pair!

WEDGES: THE SHOES OF SUMMER & THE PERFECT PLATFORM TO ANY OUTFIT.

- A. Ankle-strap Wedge Espadrille, Bone (4FG) or black (90). Imported canvas. Sizes 5-11; 6½-8½, 4½" heel with 1" jute platform. FN-316-273 Orig. \$59. Sale \$39.
- B. Ankle-wrap Wedge Sandal, Black/natural (X24) cotton/haylene or cognac (789) polyurethane. Imported. Sizes 5-11; 6½-8½, 4½" heel with 1¼" jute platform. FN-299-696 \$88.
- C. Coil-wrap Wedge Sandal, Black (30Q). Imported polyurethane. Sizes 5-11; 6½-8½, 5½" heel with 1" jute platform. FN-315-395 \$88.
- D. T-strap Wedge Sandal, Black (93) or copper (30C). Imported polyurethane. Sizes 5-11; 5½-10½, 4½" heel with 1" cork platform. FN-310-369 Orig. \$88. Sale \$69.
- E. Strappy Wedge Sandal, Evening blush (B70) or frosted gold (5W4). Imported polyurethane. Sizes 5-11; 6½-8½, 4" heel with 1¼" jute platform. FN-316-274 Orig. \$59. Sale \$39.



FREE SHIPPING
WITH \$25 CLOTHING
OR SHOE PURCHASE
USE CODE: SP1442269
Details, pg. 47

STYLIST INTEL

Cork and jute wedges add plenty of texture. Keep the rest of your look simple, like the four white dresses ahead...

White dresses

THERE'S A REASON WHY "SUMMER WHITES" IS A THING. THIS YEAR, IT FEELS ESPECIALLY FRESH WITH A BOHO TOUCH.

FREE SHIPPING

WITH \$25 CLOTHING
OR SHOE PURCHASE

USE CODE: SP1441269

Details, pg. 47

A. Tiered Lace Dress.
White (DK9) or black (93).
Imported cotton voile.
Sizes 0-14. 17" from waist.
FN-316-127 \$148.

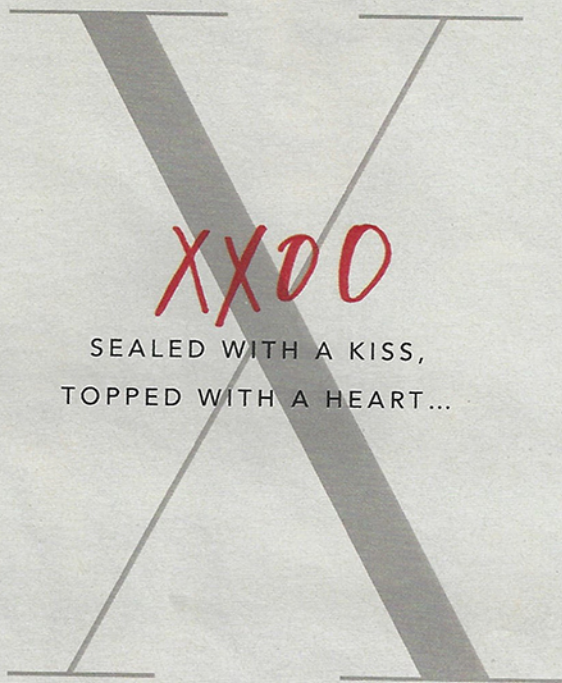
B. Smocked Maxi Dress.
VS white (DK9). Imported
cotton. Sizes XS-XL.
41" from waist.
FN-316-124 \$138.

C. V-neck Festival Dress.
White (DK9) or black (93).
Imported rayon.
Sizes XS-XL. 16" from waist.
FN-309-169 \$98.

**D. Cap-sleeve Babydoll
Dress.** White (DK9),
blush (B70) or black (93).
Imported cotton. Sizes 0-14.
18" from waist.
FN-311-547 \$98.

**E. Leather Gladiator
Sandal.** Copper (3R3)
or black (93). Imported
leather. Sizes 5-11; 6½-8½.
½" heel. FN-310-291 \$98.





SEALED WITH A KISS,
TOPPED WITH A HEART...



A. Fleece Pullover Hoodie. Snow grey/hearts & dots (GM1). Imported cotton/polyester. Sizes XS-XL. FN-311-051 \$59.50.

B. Graphic Muscle Tank. From our Supermodel Tees collection. Allover kisses (69X). Imported modal. Sizes XS-XL. FN-314-982 \$29.50.

C. The Love Tee. From our Textured Tees collection. Heather charcoal/in love with a local (6K3). Imported cotton/polyester. Sizes XS-XL. FN-313-415 \$29.50.

D. High-neck Tank. Heather charcoal (93, shown), black (56J) or white (DK9). Imported polyester/flax. Sizes XS-XL. FN-310-489 \$29.50. *Special 2/\$50.*

E. Fleece Crop Pant. Heather charcoal/ombré VS (6MN). Imported cotton/polyester. Sizes XS-XL. 24" inseam. FN-310-973 \$44.50.

F. Cropped Tank. From our Sunwashed Terry collection. Got a mint/bon voyage (6HC). Imported cotton/polyester. Sizes XS-XL. FN-315-054 \$39.50.

G. Love City Jelly Flip Flops. From Mel by Melissa. Black (4AW, shown right), pink (5SH, shown below right) or nude (4PQ). Imported recycled PVC. Whole sizes 6-10. 1/4" heel. FN-311-062 \$33.

H. Fleece Short. VS white (5XU) or black (5YF). Imported cotton/polyester. Sizes XS-XL. Regular, 3" inseam. Long, 5" inseam. FN-310-975 \$29.50.

I. Graphic Fleece Pullover. True navy/lips (65Z). Imported cotton/polyester. Sizes XS-XL. FN-305-252 \$49.50.

A-D. The Most-loved Yoga Bottoms. Colors, far right. Pant legs are black, imported cotton/spandex. Sizes XS-XL.

A. Legging.
Crop, shown far right. 19" inseam. Short, 29" inseam. Regular, 32" inseam. Long, 34" inseam. **FN 290-290 \$34.50. Special 2/\$55.**

B. Bootcut Pant.
Short, 30" inseam. Regular, 32" inseam. Long, 34" inseam. Extra long, 36" inseam. **FN 290-289 \$34.50. Special 2/\$55.**

C. Short.
Regular, 3" inseam. Long, 5" inseam. **FN 283-279 \$29.50. Special 2/\$40.**

D. Crop Pant, 19" inseam.
FN 290-040 \$34.50. **Special 2/\$55.**

E. Scoopneck Tank. From our Vintage Tees collection. VS white (DK9), imported polyester/lin. Sizes XS-XL. **FN 310-373 \$29.50. Special 2/\$50.**

Your ultimate day off

SPEND IT IN OUR MOST-LOVED YOGA BOTTOMS.

PSST: BUY 2 & SAVE!



A.E

the legging



B.E

the bootcut



C.E

the short



D.E

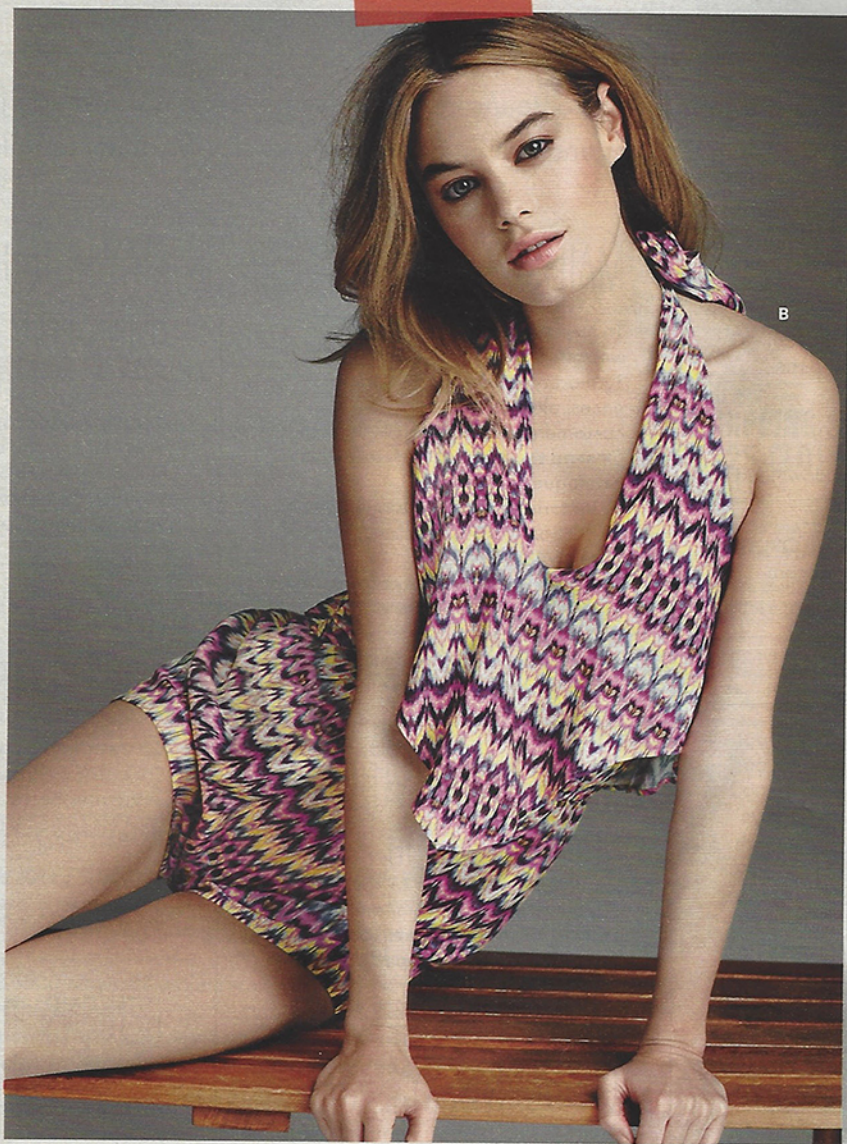
the crop pant



A.E

the crop legging





Zero accessories required

THESE BOLD COLORS & ZIGZAG PRINTS
NEED NO EXTRAS.